



York Archaeological Trust
Fieldwork Services

Historic Buildings Team

What services do we offer?

- A fully comprehensive service for the evaluation, assessment and recording of historic buildings of all types and from all periods in urban and rural locations.
- Preparation of conservation plans, management plans/statements, character statements, impact assessments, Conservation Area appraisals and reviews.
- Guidance on the planning and conservation process and advice on drafting Listed Building and Conservation Area consent applications.
- Together with our field excavation team we offer an integrated service combining excavation and building recording.
- In-house specialists able to analyse building materials along with conservation facilities.
- Promote understanding, awareness and conservation of the historic built environment.

The YAT client base includes the private and public sectors, commercial developers, utility companies and local community groups.





Why our historic buildings are important...

The nation's historic buildings have much to tell us about the ordinary lives of past generations – how people of all classes and creeds lived and worked, worshipped and spent their leisure time. We can also learn how buildings were constructed and adorned, the traditions they embodied and the aspirations they expressed. They are a living record of our social, economic and artistic history, as well as being powerful contributors to our sense of place and to feelings of local, regional and national identity.

This is recognised by Government through the planning system, Listed Building legislation and Conservation Area status. As a result, consent is required for many changes and alterations to historic buildings.

The YAT Historic Buildings Team can help guide you through the administrative and consent process. We can help before a planning application is submitted or as a response to a planning condition. A building evaluation and assessment is vital at an early stage to identify potential heritage issues and to assist develop the appropriate response for the project design.

Our Historic Buildings Services

Whether you require our services as part of a formal consent procedure, as an interested owner, or for a single building, a group of buildings or a thematic project, YAT Historic Buildings Team can help as our services include:

Assessment and evaluation

- An initial visual examination and preliminary description highlighting key significant components, date and phasing
- Comprehensive analytical evaluation of plan form and nature of fabric, roof structure, materials and architectural detail
- Consideration of a building within its townscape/landscape setting
- Base level condition survey and appraisals

Building Recording

- Detailed written description and phasing
- Measured survey plans and elevations
- Electronic survey
- Photographic survey
- Orthographic projections
- Phased and reconstruction drawings





Our Historic Buildings Services

Desk Based Assessment

To understand the history of a building, its uses and its owners or occupiers by:

- Consulting old maps, deeds, charters, wills, inventories, diaries, photographs, trade directories, etc.
- Consulting the local Historic Environment Record and county archives

Report preparation

In-house publishing to meet requirements of project design

- Supported by drawings, photographs
- Copies available electronically or as hard copy

Advisory service:

- Listed Building and conservation area consent
- Access issues
- Good practice in use of materials
- Conservation ethics and philosophy

Our Historic Buildings Services

Support Services

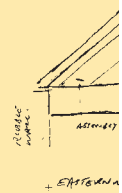
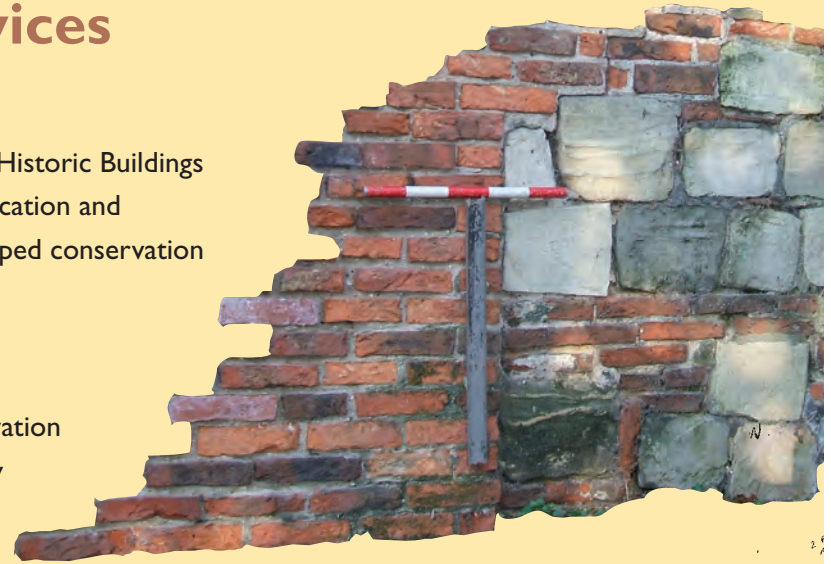
YAT has an internationally recognised repertoire of skills. Our Historic Buildings Team is supported by in-house services including wood identification and preservation, brick and tile dating and analysis, and a well equipped conservation laboratory.

An integrated service

Our field team can undertake appropriate archaeological excavation and field survey work for projects requiring a cross disciplinary intervention with historic buildings and excavation.

A wealth of experience

The YAT Historic Buildings Team has covered a wide range of historic buildings and structures of all periods, large and small, from York Minster to humble corrugated iron sheds.

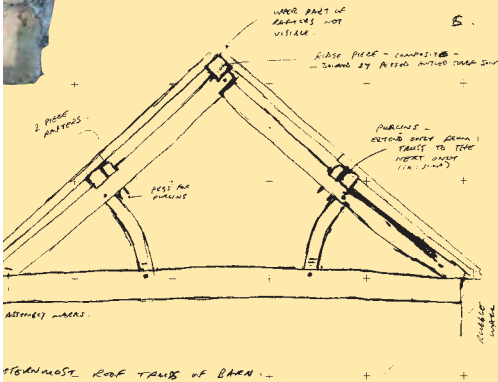


Standards

The Historic Buildings Team works to the levels and standards of buildings survey and recording recognised by English Heritage and other professionals.

All YAT projects follow approved project management procedures and all reports are in line with English Heritage and IFA report standards and guidelines.

Based in our offices in the historic centre of the City of York, the Trust has worked extensively in the north of England and beyond. Over the years YAT has built up good working relations with curators and contractors, and we have contacts with a range of specialist craftsmen in the region.



Who?

The Historic Buildings Team is headed by Mark Johnson and Huw Pritchard. Mark trained as a field archaeologist and has worked for YAT for 11 years. He specialises in the evaluation of historic buildings and has an MA in Buildings Archaeology from the University of York. His MA thesis was on medieval timber piers.

Huw has an MA in Historic Building Conservation from the University of York and is an Affiliate Member of the Institute of Historic Building Conservation (IHBC). He started out as a field archaeologist and prior to joining YAT he worked for English Heritage assessing buildings and field monuments and making Listing and Scheduling recommendations. His MA thesis was on the conservation of corrugated iron farm buildings.

How much?

At first contact we offer **free advice** to assist with initial enquiries. We may be able to provide up-front work free of charge for selected projects subject to our appointment to carry out any further works that may be required by planning conditions.

No other commercial archaeological services provider works in this way.

What next?

Contact us and we'll take care of the rest.



Tel: 01904 663000

Fax: 01904 663024

archaeology@yorkat.co.uk

www.yorkarchaeology.co.uk